

MERCER ISLAND CENTER FOR THE ARTS CONCEPTUAL MITIGATION PLAN



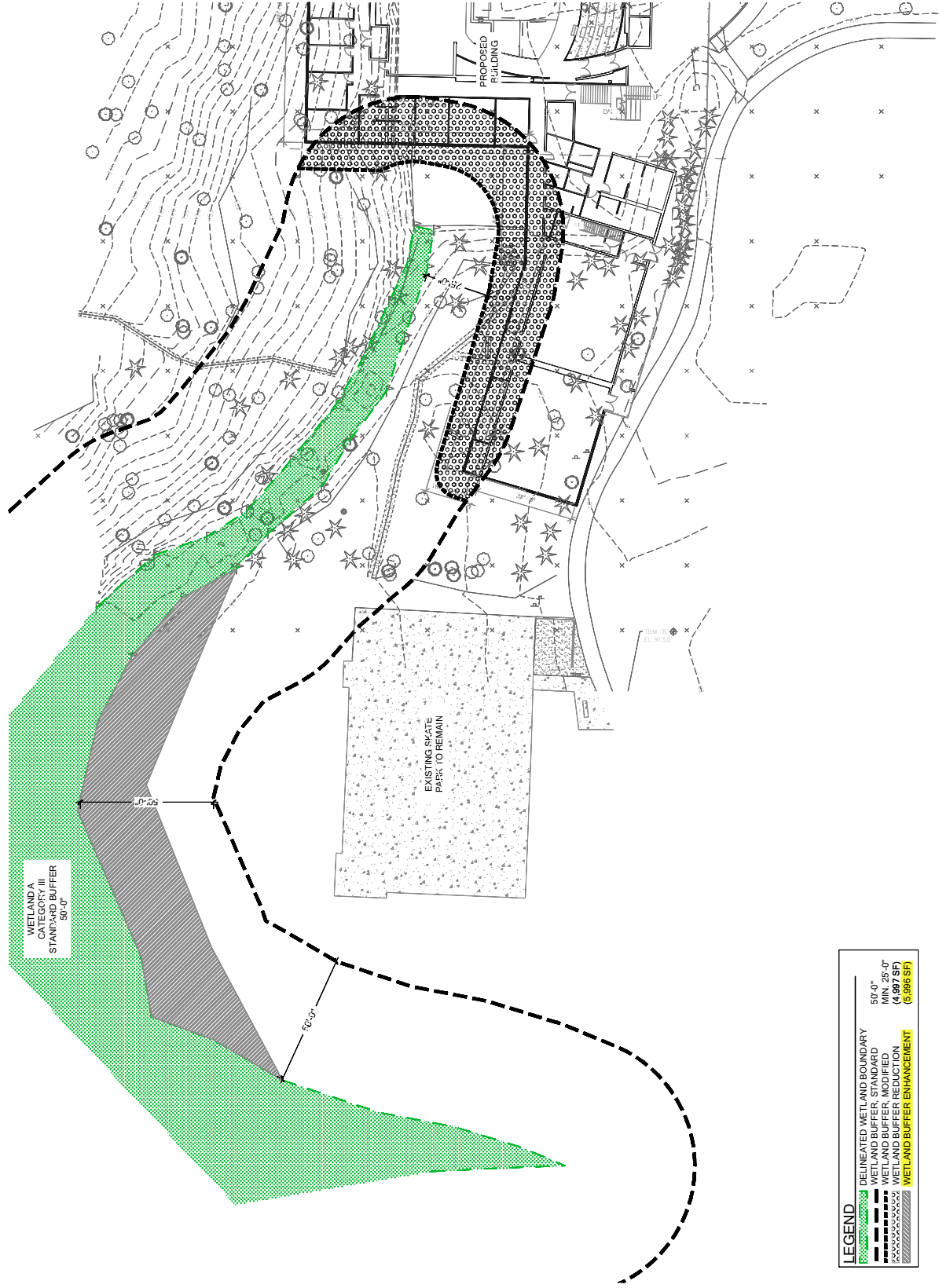
750 Sixth Street South
 Kirkland WA 98033
 p:425.822.5242
 www.watershedco.com

Science & Design

MERCER ISLAND CENTER FOR THE ARTS
 PREPARED FOR AMS PLANNING & RESEARCH
 PROJECT LOCATION:
 77TH SE & SE 32ND STREET (PARCEL # 1224049068)
 MERCER ISLAND, WA 98040

| NO. | DATE | DESCRIPTION |
|-----|----------|-------------|
| 1 | 08-21-15 | REVIEW SET |
| 1 | 07-26-16 | REVISIONS |

| | |
|-------------------------|-----------------------|
| DATE PLOTTED: 8/22/2016 | DATE: 8/22/2016 |
| DRAWN BY: TMC | DRAWN BY: TMC |
| CHECKED BY: KCK/B | CHECKED BY: KCK/B |
| DESIGNED BY: MSF | DESIGNED BY: MSF |
| PROJECT MANAGER: HM | PROJECT MANAGER: HM |
| JOB NUMBER: 150320 | JOB NUMBER: 150320 |
| SHEET NUMBER: W1 OF 1 | SHEET NUMBER: W1 OF 1 |



WETLAND A
 STANDARD BUFFER
 50.0'

LEGEND

| | | |
|--------------------|-----------------------------|------------|
| [Green Stippled] | DELINEATED WETLAND BOUNDARY | 50.0' |
| [Solid Green] | WETLAND BUFFER STANDARD | MIN. 25.0' |
| [Hatched] | WETLAND BUFFER MODIFIED | (4,897 SF) |
| [Yellow Stippled] | WETLAND BUFFER REDUCTION | (5,996 SF) |
| [Diagonal Hatched] | WETLAND BUFFER ENHANCEMENT | (5,996 SF) |

DRAFT IMPACTS & MITIGATION